

# MAINTENANCE GUIDELINES



WOVEN VINYL FLOOR COVERINGS

# > CARE & MAINTENANCE

## Easy cleaning by hand or machine

A genuine technical innovation developed for the most demanding public environments, Dickson® woven flooring combines the convenient use and easy maintenance of vinyl flooring with the aesthetic appeal and unique texture of textile flooring.

Dickson's exclusive manufacturing process guarantees the flooring is absolutely impervious to liquids, dust and dirt. The warp and weft yarns are heat-sealed together and assembled to the backing while they're still hot to prevent the penetration of any dirt or liquids in between the fibres so it stays on the surface for easy clean-up.

As with all flooring, maintenance plays an essential role in keeping it looking its best over the long term.

In this document, you will find all our recommendations for maintenance, stain removal and cleaning to keep your Dickson® flooring looking its very best for as long as possible.

### > Your colour choice has a significant impact on maintenance

The colour of your flooring directly affects the maintenance requirements. Dirt and stains are less visible on chiné (marbled) shades than solid colours (whether light or dark). Depending on the location and the amount of traffic, this is an important aspect to consider when making your selection.

### > Allow the flooring to set. The following waiting periods must be respected before you can fully enjoy your new flooring :

- For normal traffic zones, wait 24 hours after installation is complete before using the room.
- Wait 72 hours before proceeding with the first deep cleaning.
- Wait 72 hours before placing or arranging furniture in the room.

### > Effective maintenance absolutely must include 3 types of actions :

- 1 PROTECTION
- 2 REGULAR CLEANING
- 3 DEEP CLEANING

# 1 PROTECTION

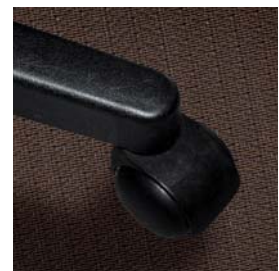
## > Take preventative measures

- Most dirt comes from outdoors. Installing well suited doormats at the entranceways will prevent 80% of the potential dirt and moisture from penetrating the premises.
- This provides many advantages, such as lower cleaning and maintenance costs, and a longer life for your flooring.
- To remain effective, doormats should be vacuumed daily.

## > Protect the flooring from potential physical damage

- **Legs on furniture** with angular or dirtying edges or that must support heavy weights (large cabinets or tables) should be placed on smooth protective pads to avoid damage to the flooring.
- **Casters on office chairs**, rolling cabinets and trolleys should have a soft edge wheels. Replace any hard or angular casters with soft-edged wheels.

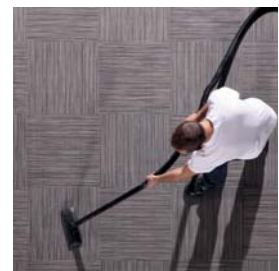
Never use rubber materials (oil from the rubber can cause permanent discolouration of the flooring).



# 2 REGULAR CLEANING

## > Vacuuming

- Vacuum your flooring regularly to keep dust at bay.
- It is important to identify the amount of traffic expected for each area in order to accurately determine just how often you need to vacuum.



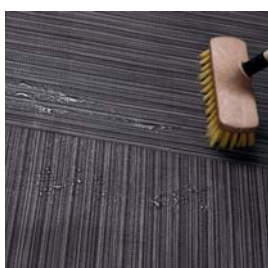
## > Spot/stain removal

- Stains/spills should be cleaned up as quickly as possible, when they are still fresh, and then rinsed with clear water. See our recommendations for stain treatment.



## > Washing

- Dilute a dose of neutral detergent in a bucket of warm water.
- Using a soft bristle broom, mop the floor with the solution.
- Wait a few minutes and then rinse with clear water.
- Dry the surface with a soft microfibre rag or the equivalent.



### SMART TIPS

For large areas, regular cleaning can be done with an automatic washer

see step

3

## 3

## DEEP CLEANING WITH AN INJECTION/EXTRACTION CARPET CLEANING MACHINE

The principle of this system is to inject a highly diluted solution of detergent and warm water (hot if treating greasy stains) to loosen the dirt, and then immediately suck it all up with a powerful wet vacuum (extractor).

- The area to be treated must first be carefully dusted.
- Next, treat the tough stains.
- Then fill the water tank section of the carpet cleaning machine with warm or hot water and a bit of detergent.
- Wash in straight lines, along the length of the flooring if at all possible. With each new passage, overlap the previous one by about a third of the width of the cleaning nozzle to avoid leaving any traces behind.



### IMPORTANT

Use a carpet cleaning machine equipped with soft bristle rollers.

- After each cleaning, immediately go back over the same area without injecting any detergent, just using the extraction mode.
  - Repeat the injection/extraction process in areas where dirt remains visible after the initial cleaning process.
  - Lastly, the same operations should be carried out only using clear water in order to rinse the flooring.
- This method can be used for regular maintenance. But in that case, only treat the heavy traffic zones. To save time, we recommend only using a small amount of neutral detergent to avoid having to rinse.

# Treating stains

STAINS	STAIN REMOVERS
Traces of acrylic glue and/or paint	C essence or white spirit. After applying the solvent, carefully wipe the flooring.
Drop of paint or chewing-gum	Use a freeze spray and then delicately remove the paint/gum with a spatula.
Wine, beer, non-alcoholic beverages, milk, fruit, cream	Hot water and a neutral cleaning agent with a few drops of ammonia if necessary.
Chocolate, oil, coffee/tea, grease, tar	Hot water and powerful alkaline detergent. For tough stains, apply a solvent such as C essence or white spirit. Rinse thoroughly.
Shoe/scuff marks	Rub with a dry rag.
Ink, ball-point pen, marker, lipstick	Methylated spirits
Rust	A neutral cleaning agent and 10% oxalic acid
Blood	Cold water and ammonia
Cigarette burns	Scrape with a spatula and then apply a few drops of lacquer.



## IMPORTANT

Never use acetone, trichloroethylene, wax, greasy detergent or nail polish remover.

# Establish a maintenance protocol

How often you need to clean the flooring mainly depends on its location and the amount of traffic to which it is subjected.

We recommend you establish a maintenance protocol that will determine the cleaning frequency for each type of area.

Sample protocol :

**HEAVY TRAFFIC AREA :** ONCE A DAY

**NORMAL TRAFFIC AREA :** 2 TO 3 TIMES A WEEK

**MINIMAL TRAFFIC AREA :** ONCE A WEEK



DICKSON CONSTANT SARL - capital 12.640.000 euros - 381 347 970 R.C.S Roubaix-Tourcoing  
Crédit photos : Ouais de l'image / Raison de plus / Fotolia / Getty images - Edition Janvier 2013

10 rue des châteaux  
BP 109 - Z.I. la Pilaterie  
59443 Wasquehal Cedex - France  
[www.dickson-constant.com](http://www.dickson-constant.com)  
Tél. + 33 (0)3 20 45 59 59  
Fax. + 33 (0)3 20 45 59 00

A  **GLEN RAVEN**  
Company

Performance fabrics for :  
solar protection  
outdoor furniture  
indoor furniture  
marine furnishing  
flooring

  
**DICKSON**<sup>®</sup>  
innovative textiles for your world